**250 Rosendale Road, SE24**

2 bedroom flat to let

**£439 Per Week**

Part furnished

## Property Details

This generously proportioned two-bedroom flat in a new build block offers plenty of space with bright bedrooms, a large reception and a fully equipped kitchen which leads off the reception. The main bedroom has an en-suite bathroom. This gorgeous flat has its own private garden accessed directly from the reception room and secure gated parking and is located just moments away from Brockwell Park with many lovely coffee shops and restaurants you can take advantage of in your surrounding area. You will also have Herne Hill at a close distance, with all its amenities available.

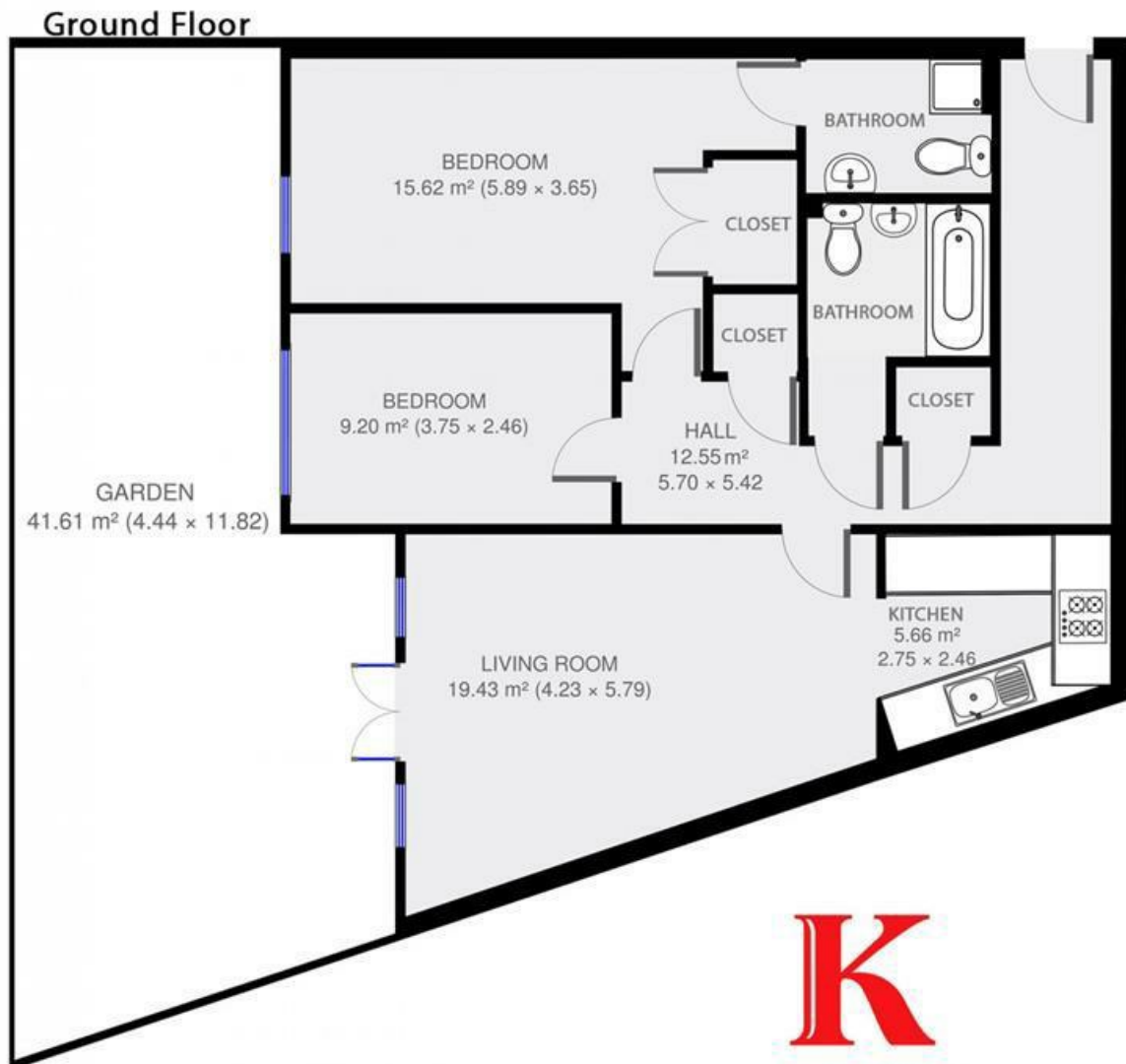
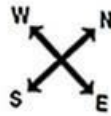
## Features

- Private garden
- 1 Bedroom
- Characterful features
- En-suite bathroom
- Around a 3 minute walk to Brockwell park
- Separate kitchen

Council tax band    EPC rating C (77)



## Forest Court



2 Bed Flat.

Approx internal area:

**862 sqft 80 sqm**

While we do try our very best, floor plans are produced as a guide only and we take no responsibility for the precise accuracy with which any property is represented

250 Rosendale Road, SE24

