



Trent Road, Brixton, SW2

2 bedroom flat - conversion for sale

£525,000

Leasehold

Property Details

A charming two double-bedroom Victorian conversion apartment, occupying the top floor of an elegant period property on Trent Road, a quiet residential street with local amenities just moments away. This well-appointed home blends character, style, and practicality, boasting generous proportions, tasteful décor, and ample storage, including a substantial loft. The separate reception room is a welcoming space to unwind or entertain, bathed in natural light from two sash windows, with built-in storage and room for dining. Adjacent, the stylish kitchen pairs trendy blue shaker cabinetry with sleek white wall units, enhanced by a lofted ceiling and skylight. Both bedrooms are spacious doubles, peacefully positioned at the rear. The principal bedroom, currently used as a dining room and home office, features built-in wardrobes, while the second bedroom offers a cosy retreat with a chic teal feature wall. A stylish bathroom with a walk-in shower and skylight completes this appealing home, further enhanced by significant loft storage.

Council tax band C EPC rating C (72)

Features

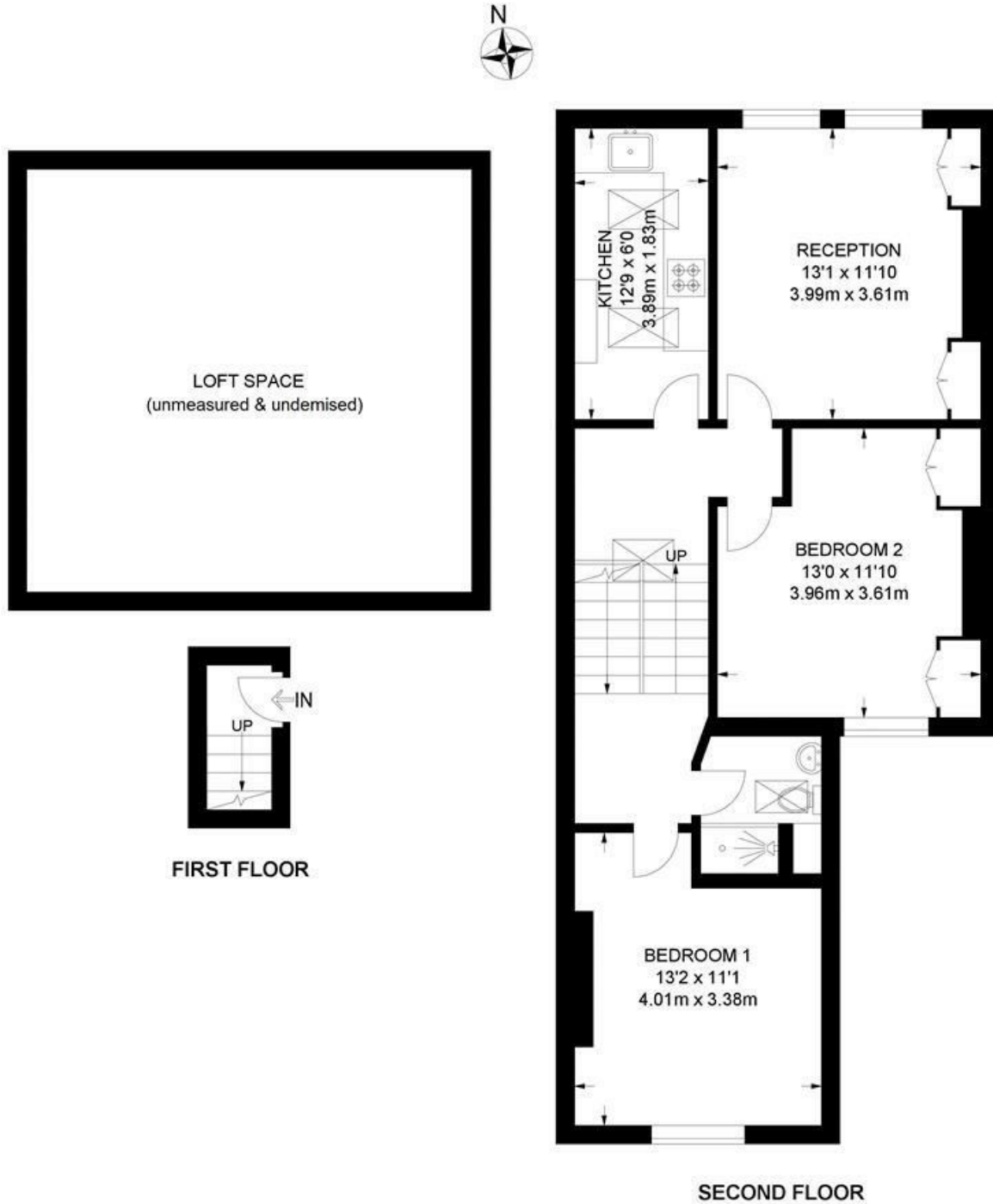
- Two double bedrooms
- Victorian conversion
- Bright and airy
- Beautifully presented throughout
- Spacious loft storage
- Local amenities at the end of the road
- Central Brixton an eight-minute stroll
- Victoria line and Overground
- Brockwell Park close by



Trent Road, Brixton, SW2

Trent Road, SW2
2 Bedroom Flat

APPROXIMATE GROSS INTERNAL AREA: 706 SQ FT / 65.6 SQ M



While we try our very best, floor plans are produced as a guide only and we take no responsibility for the precise accuracy with which any property is represented.

Trent Road, Brixton, SW2

