



Brixton Water Lane, Brixton, SW2

2 bedroom flat to let

£520 Per Week

Furnished

Property Details

A sleek, luxurious two bedroom flat. This development is engineered throughout for a sense of space, luxury and light through a fluid design which makes excellent use of the already generous footprint of each unit. This flat offers a wonderful private balcony as well as access to a brilliant communal roof terrace over looking Brixton. Set next to a charming conservation area, the development offers modernity and quality in a tranquil area a stone's throw from the heart of vibrant Brixton. Brockwell Park is only three minutes walk away, as are an enormous quantity and variety of nightlife, and three stations are within easy reach.

Features

- Two bedrooms
- Communal roof terrace
- Modern development
- Bright and airy
- Close to Central Brixton
- Private balcony
- Minutes from Brockwell Park

Council tax band C EPC rating B (82)



K

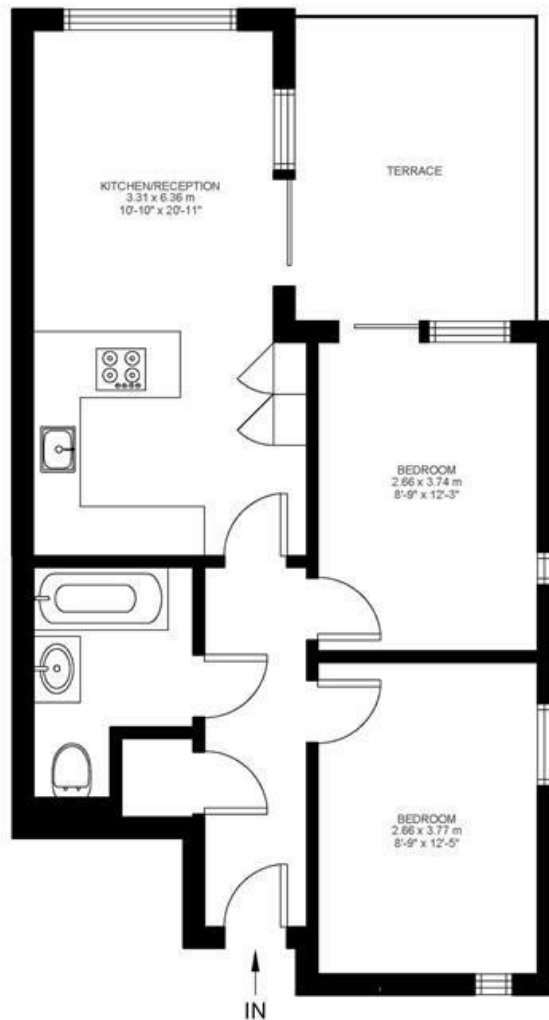
Brixton Water Lane

2 Bed flat

Approx internal area:

577 sqft 54 sqm

While we do try our very best, floor plans are produced as a guide only and we take no responsibility for the precise accuracy with which any property is represented



Third Floor



Brixton Water Lane, Brixton, SW2

