

Holmewood Gardens, Brixton, SW2

2 bedroom flat - conversion for sale

£530,000

Share of Freehold

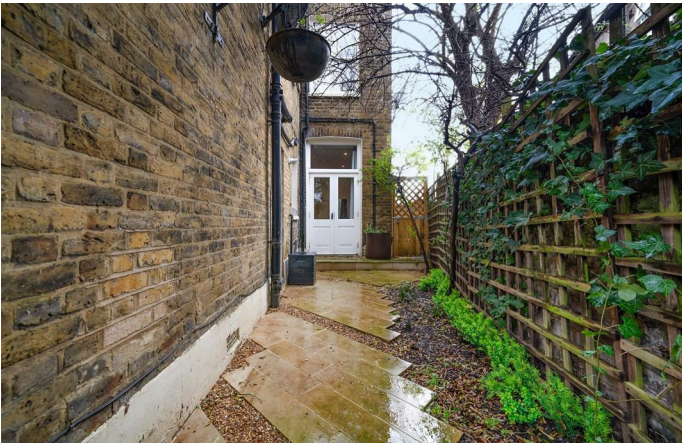
Property Details

A charming two double-bedroom Victorian garden flat, overlooking the picturesque Holmewood Gardens in an extremely popular residential pocket. Beautifully presented with a blend of character and contemporary style, the property boasts original Victorian tiling in the welcoming hallway. The front bedroom, currently used as a cosy lounge, features high ceilings, wooden floors, bespoke shelving with LED lighting, and a charming bay window with shutters. At the rear, the open-plan reception was refurbished in 2020 with a stylish blue kitchen, Bosch appliances, and an induction hob, creating a sociable and functional space with views over the private garden. Re-landscaped in 2022, the garden offers a stylish seating area and faux lawn for year-round greenery, with side access for convenience. The second double bedroom benefits from French doors to the garden, while the neutral bathroom separating the bedrooms. A cellar provides additional storage, and a new boiler was installed three years ago. Offering nearly 750 square feet, the layout is flexible, and adaptable as either a one or two-bedroom home to suit the buyer's needs.

Council tax band D EPC rating D (64)

Features

- Two double bedrooms
- Private landscaped garden with side access
- End-of-terrace Victorian conversion
- Characterful features
- Overlooking a pretty garden square
- Local shops, cafes and pubs on the doorstep
- Fifteen-minute walk to Brixton
- Nine-minute walk to Streatham Hill
- Excellent variety of transport links
- Share of freehold



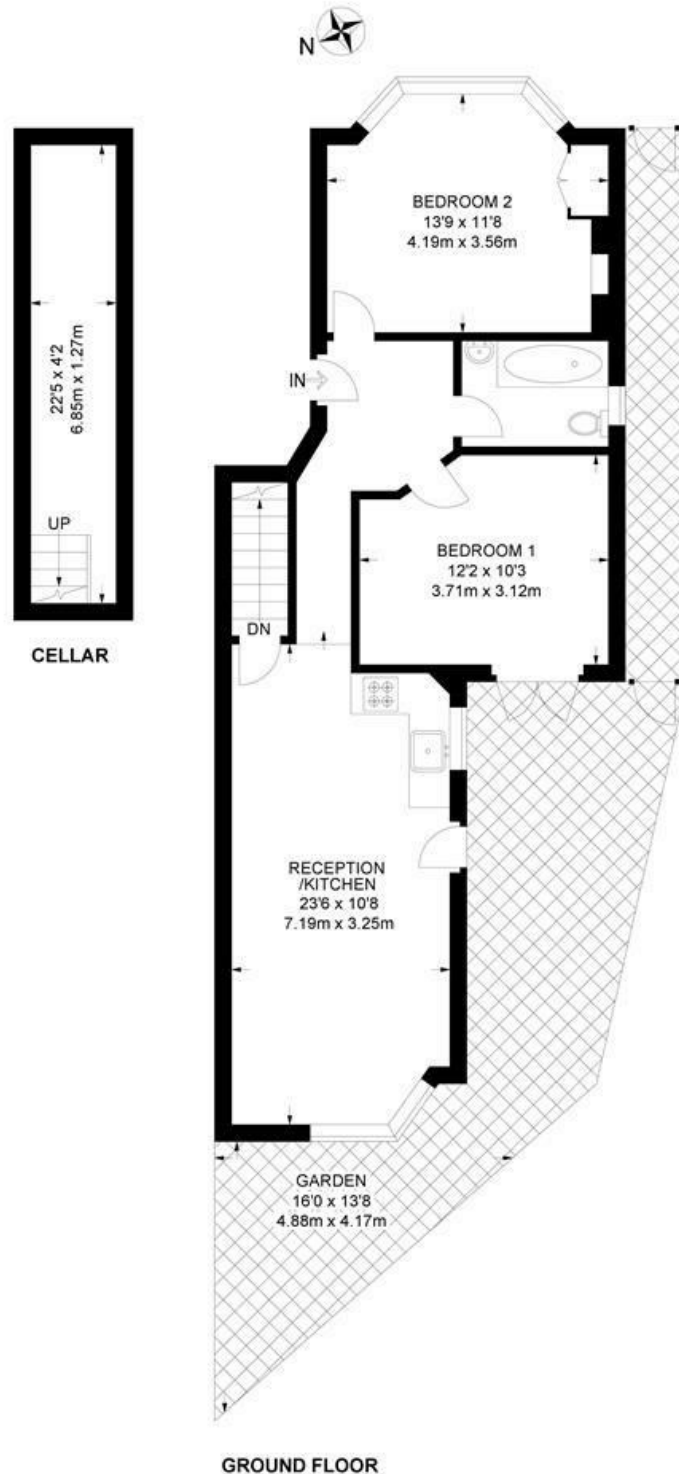


Holmewood Gardens, SW2

2 Bedroom Flat

APPROXIMATE GROSS INTERNAL AREA WITH CELLAR: **740 SQ FT / 68.7 SQ M**

APPROXIMATE GROSS INTERNAL AREA WITHOUT CELLAR: **647 SQ FT / 60.1 SQ M**



While we try our very best, floor plans are produced as a guide only and we take no responsibility for the precise accuracy with which any property is represented.

Holmewood Gardens, Brixton, SW2

