



**Bedford Road, Clapham, SW4**

1 bedroom flat - conversion for sale

**£465,000**

Share of Freehold

## Property Details

A stylish one bedroom period conversion with a unique horseshoe layout, set on the first floor of a semi-detached house. Bright and private, this thoughtfully designed home is enhanced by generous windows. The reception room is a versatile space with two large windows flooding it with natural light. There's ample room for lounging and dining, plus a handy nook ideal for a study or reading corner. Contemporary flooring and sleek downlighting add modern appeal. The separate shaker-style kitchen blends classic and contemporary design in an elegant hue, a charming range cooker, shelving for display storage, and a well-placed sink below the window. The peaceful rear bedroom boasts fitted wardrobes and leafy views, while the luxurious marbled bathroom offers a double-ended bathtub and overhead rain shower. For outdoor enthusiasts, there's the option to apply for nearby allotments at the back of the property. A beautifully designed home in an excellent location.

## Features

- One double bedroom
- Semi-detached period conversion
- Stylishly presented
- Around 450 square feet
- Bright and airy
- Clapham High Street just a six-minute stroll
- Brixton within walking distance
- Northern and Victoria tube lines
- Share of freehold

Council tax band C    EPC rating C (75)



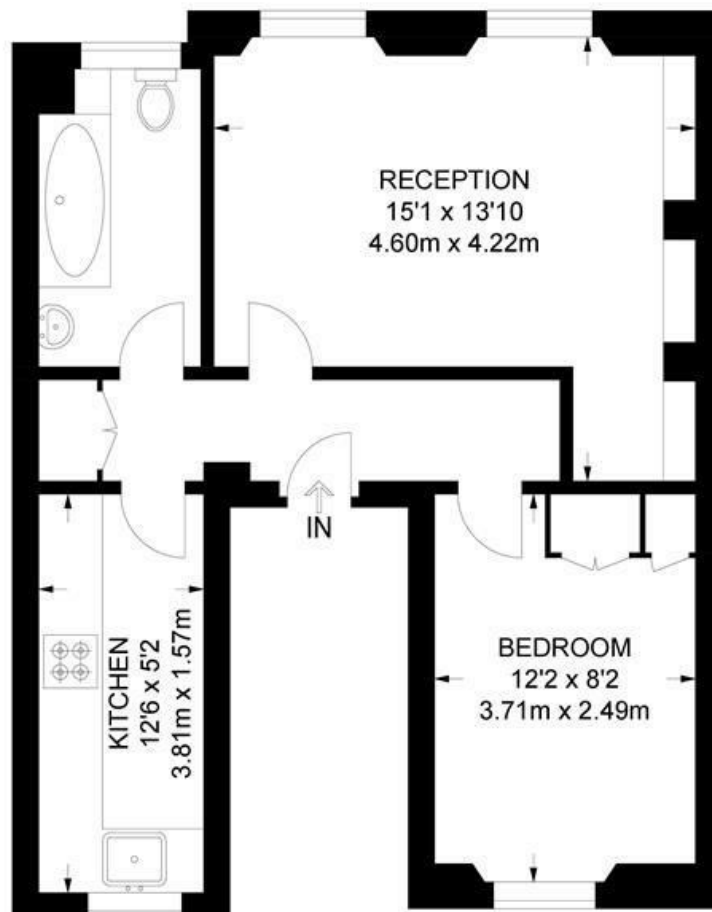


Bedford Road, Clapham, SW4

## Bedford Road, SW4

### 1 Bedroom Flat

APPROXIMATE GROSS INTERNAL AREA: 450 SQ FT / 41.8 SQ M



FIRST FLOOR



While we try our very best, floor plans are produced as a guide only and we take no responsibility for the precise accuracy with which any property is represented.

Bedford Road, Clapham, SW4

