

Helix Road, Brixton, SW2

2 bedroom flat - conversion for sale

£560,000

Share of Freehold

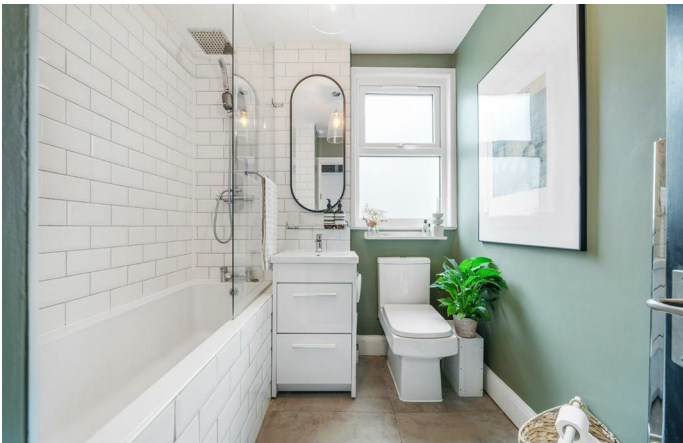
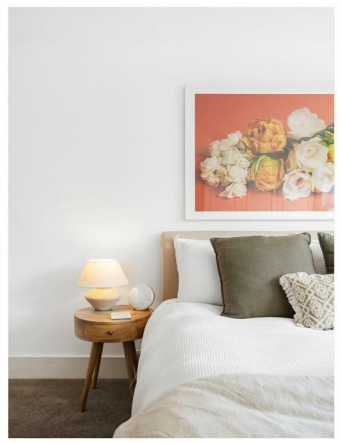
Property Details

Beautifully presented, this two-bedroom Victorian apartment seamlessly blends charming period features with tasteful modern updates. Thoughtfully enhanced, the home boasts double glazing in the lounge, a refurbished bathroom, stylish redecoration, and a modernised kitchen. Original wooden flooring, a characterful fireplace, and original floorboards beneath the carpets add to its timeless appeal. Flooded with natural light, the apartment enjoys a dual-aspect flow—morning sunlight graces the bedroom, especially stunning in spring, while the reception basks in warm evening sunsets. The reception is the heart of the home, exuding charm and ideal for both relaxing and entertaining. The separate kitchen, updated with chic blue cabinetry, provides ample storage and a delightful culinary space. The split-level layout enhances privacy, with both bedrooms quietly positioned at the rear. The principal bedroom is a tranquil retreat with fitted wardrobes, while the second bedroom, previously rented as a double, currently serves as a spacious home office. A stylishly refurbished bathroom with a rainfall shower over the bathtub completes this inviting home, offering abundant integrated storage throughout.

Features

- Two bedrooms
- Victorian conversion
- Beautifully presented throughout
- Bright and characterful
- Popular quiet residential street
- Local pubs, cafes and shops on the doorstep
- Brixton a ten-fifteen minute stroll
- Herne Hill a fifteen-minute walk
- Brockwell Park close by
- Share of freehold

Council tax band C EPC rating C (74)

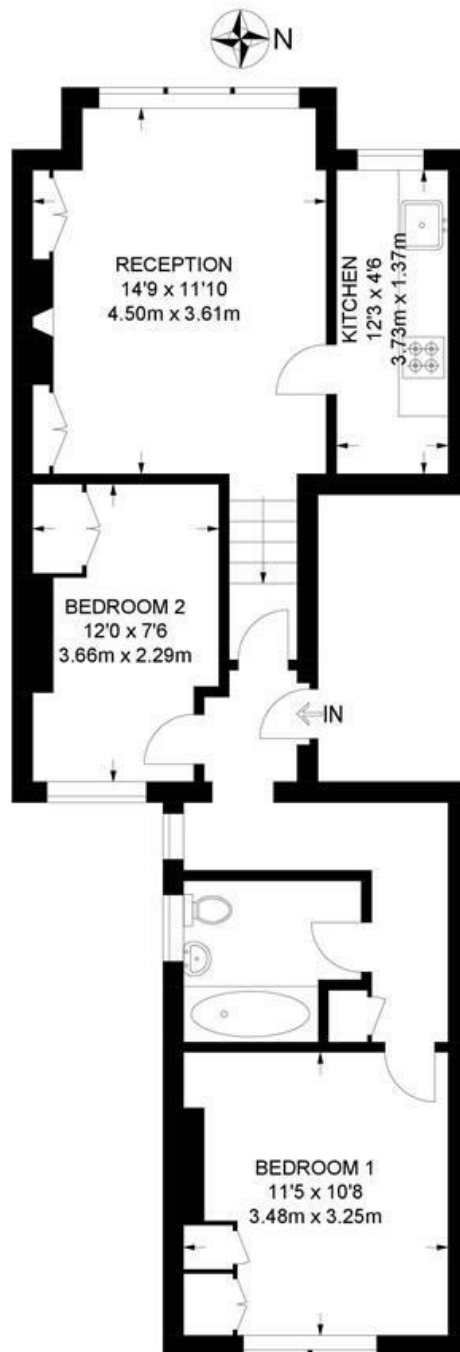




Helix Road, Brixton, SW2

Helix Road, SW2
2 Bedroom Flat

APPROXIMATE GROSS INTERNAL AREA: **594 SQ FT / 55.2 SQ M**



FIRST FLOOR



While we try our very best, floor plans are produced as a guide only and we take no responsibility for the precise accuracy with which any property is represented.

Helix Road, Brixton, SW2

