

Kildoran Road, Brixton, SW2

1 bedroom flat - conversion for sale

£425,000

Share of Freehold

Property Details

Beautifully presented, this one bedroom top floor flat sits within a handsome period conversion, enjoying an abundance of local amenities in every direction. Flooded with natural light, the property offers a peaceful retreat in a prime location. Lovingly upgraded during the current ownership, the home has undergone a full redecoration, with stylish new flooring throughout, an upgraded kitchen and bathroom, and additional enhancements, including a new fuse board and full double glazing for energy efficiency. The bright and airy open-plan reception is enhanced by large skylights and built-in storage, creating a welcoming space for both relaxation and entertaining. The sleek kitchen, set to the rear, features shaker-style cabinetry, chic subway tiling, and high-quality appliances, forming a truly pleasant place to cook. Tucked away at the rear, the double bedroom is a tranquil sanctuary, benefitting from fitted wardrobes and double glazing. The tastefully renovated bathroom offers a neutral aesthetic, complete with a bathtub and overhead shower, plus wicker storage. A charming and well-finished home.

Features

- One double bedroom
- Victorian conversion
- Bright and airy
- Beautifully presented throughout
- Local amenities and eateries on the doorstep
- Equidistant between Clapham and Brixton
- Northern and Victoria Lines, Overground and Trains
- Share of freehold

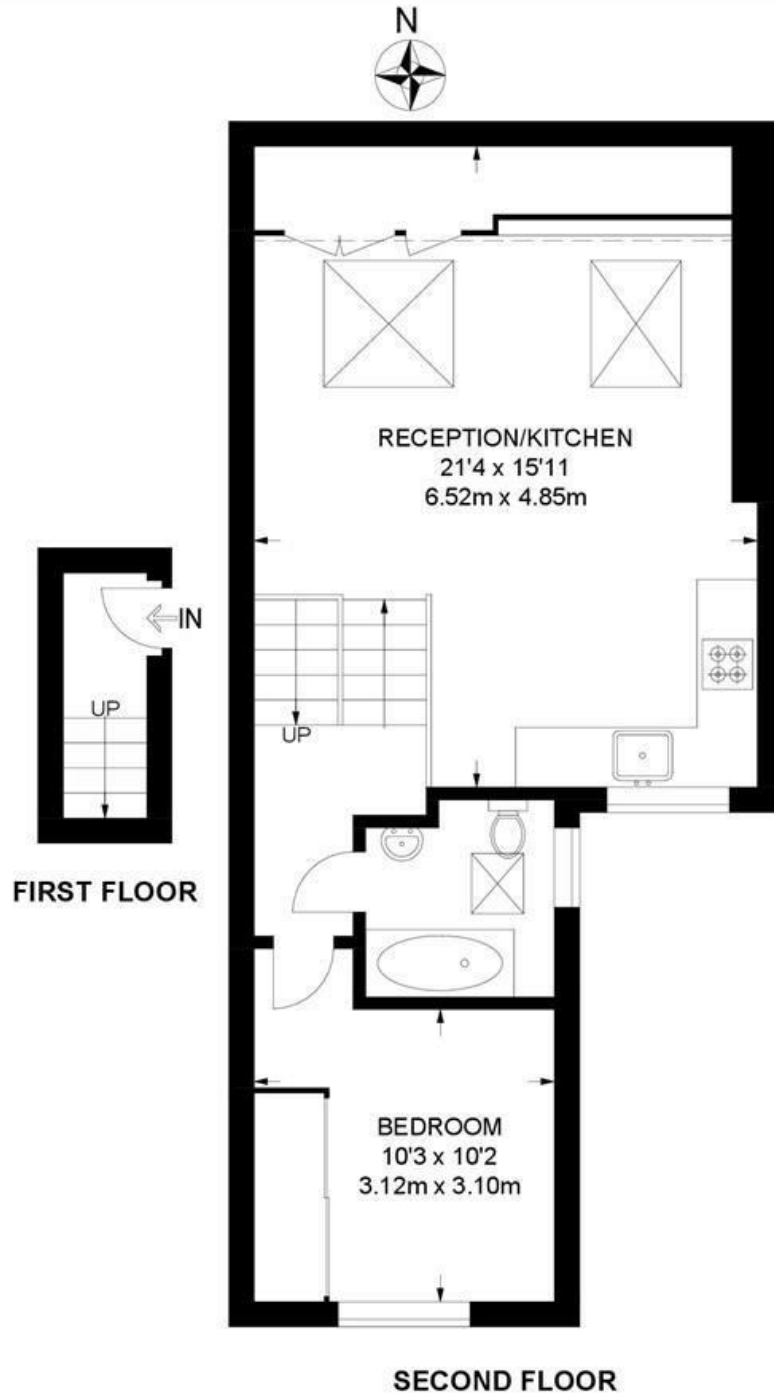
Council tax band C EPC rating C (75)



Kildoran Road, Brixton, SW2

Kildoran Road, SW2
1 Bedroom Flat

APPROXIMATE GROSS INTERNAL AREA: **554 SQ FT / 51 SQ M**



While we try our very best, floor plans are produced as a guide only and we take no responsibility for the precise accuracy with which any property is represented.

Kildoran Road, Brixton, SW2

