



**Charles Haller Street, Brixton, SW2**

2 bedroom flat - purpose built for sale

**£475,000**

Leasehold

## Property Details

A wonderfully bright and airy two double bedroom, two bathroom apartment with a Juliet balcony, set within a friendly gated development beside Brockwell Park. Offering security, and an allocated parking space, this sought-after location feels lovely and peaceful. Recently redecorated, the home opens into a welcoming entrance hall with newly installed laminate flooring and double doors leading into the reception room. The reception serves as the heart of the home, with generous space to relax, dine, and entertain. Juliet balcony doors invite in fresh air, perfect for warmer months. Adjacent, the separate kitchen offers ample storage within modern cabinetry, integrated appliances, a new gas hob, and wrap-around work surfaces. Both bedrooms are well-proportioned, ideal for home working while maintaining comfortable sleeping arrangements. The main bedroom boasts an en-suite shower room and built-in wardrobes, while a stylish family-sized bathroom sits between the bedrooms for added privacy. This resident-run development fosters a strong sense of community, with social events and direct gated access to Brockwell Park—plus the rare benefit of allocated off-street parking.

Council tax band D    EPC rating (null)

## Features

- Two double bedrooms
- Two bathrooms
- Juliet balcony
- Secure gated development with an entrance onto Brockwell Park
- Off-street parking
- Local amenities and eateries
- Heme Hill a twelve-minute stroll across the park
- Brixton a fifteen-minute walk away
- Victoria Line and Thameslink
- Chain-free

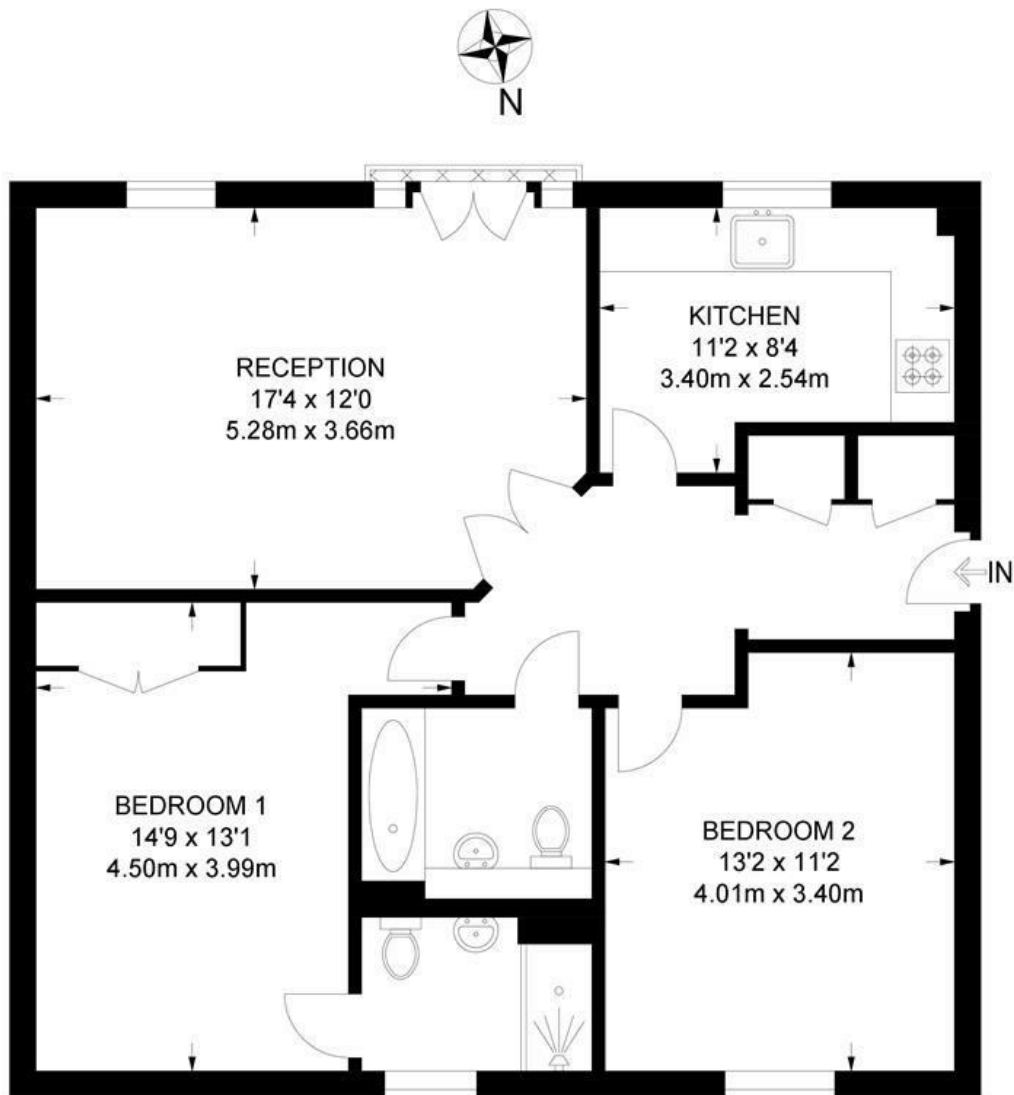




Charles Haller Street, Brixton, SW2

**Charles Haller Street, SW2**  
**2 Bedroom Flat**

APPROXIMATE GROSS INTERNAL AREA: 786 SQ FT / 73 SQ M



While we try our very best, floor plans are produced as a guide only and we take no responsibility for the precise accuracy with which any property is represented.

Charles Haller Street, Brixton, SW2

