



Poynders Road, Clapham South, SW4

2 bedroom flat for sale

£350,000

Share of Freehold

Property Details

A light and airy two double bedroom flat with a South-facing balcony, securely nestled on the second floor of a popular 1930s building on Poynders Road. Well-proportioned with a fantastic layout, this inviting home offers an excellent opportunity to settle in effortlessly while leaving scope for personalisation over time. The bright and spacious reception room provides a cosy yet versatile space for relaxing or entertaining. A separate modern galley kitchen is well-equipped with sleek cabinetry, wooden worktops that extend into a breakfast bar, and direct access to a private South-facing terrace—perfect for unwinding in the sun or enjoying al fresco dining. Both bedrooms are generous doubles, while the flexible layout allows for reconfiguration if a larger social space is desired. A contemporary bathroom, complete with a bathtub and overhead shower, completes the home. Ideally located within walking distance of Clapham South (Northern Line) and the green open spaces of Clapham Common, this charming property offers convenience, comfort, and excellent transport links.

Features

- Two double bedrooms
- Private South-facing terrace
- 1930s Art Deco building
- Bright and airy
- Versatile layout
- Northern Line a ten-minute stroll
- Abbeville Road a four-minute walk
- Clapham and Balham high-streets nearby
- Share of freehold
- Chain-free

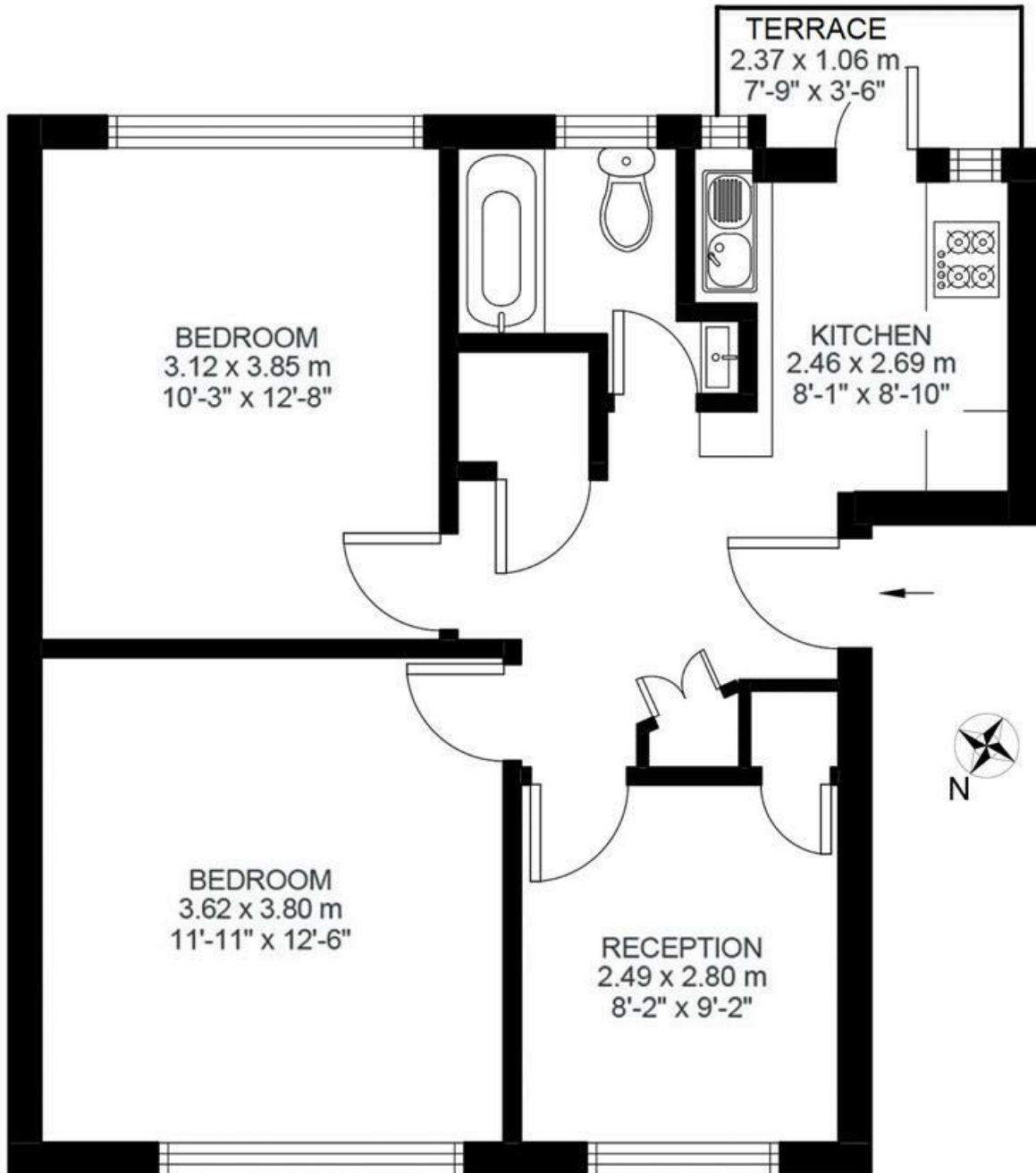
Council tax band A EPC rating C (77)



Poynders Road, Clapham South, SW4

Poynders Road, SW4
2 Bedroom Flat

APPROXIMATE GROSS INTERNAL AREA: **611 SQ FT / 57 SQ M**



SECOND FLOOR



While we try our very best, floor plans are produced as a guide only and we take no responsibility for the precise accuracy with which any property is represented.

Poynders Road, Clapham South, SW4

