

**Acre Lane, Brixton, SW2**

2 bedroom maisonette for sale

**£600,000**

Leasehold

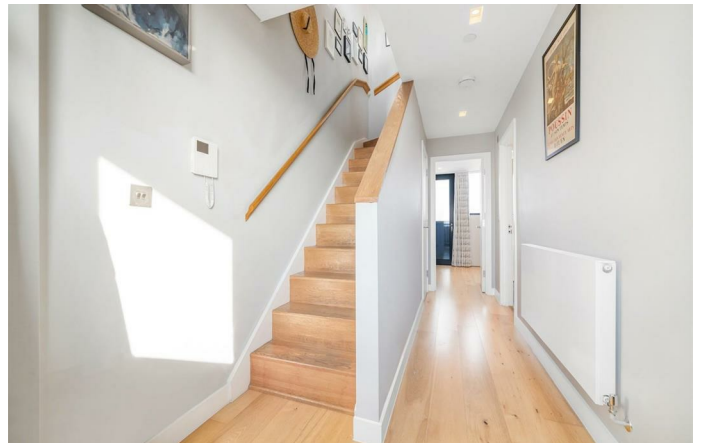
## Property Details

An outstanding two double-bedroom split-level penthouse boasting breathtaking panoramic views of the London skyline, complete with a private seventh-floor terrace. This exceptional modern duplex sits atop a well-maintained Art Deco building and benefits from its own entrance. Designed for contemporary living, the home showcases stunning architectural design, high-quality finishes, and abundant natural light. A sleek wooden staircase leads to the impressive open-plan living space, where dual-aspect floor-to-ceiling windows frame the city skyline. The elegant gloss kitchen offers generous storage and worktops, while the private South-facing terrace is perfect for al-fresco dining. Descending to the lower floor, both bedrooms are spacious doubles, thoughtfully positioned for privacy. The principal bedroom features a standing terrace with far-reaching views, and the second bedroom, currently a nursery, offers versatility. Highly energy-efficient, the property keeps utility bills low and has approximately three years remaining on its International Construction Warranty. A video entry system ensures security, while residents enjoy a communal garden and the convenience of a lift. Option of private parking via separate agreement.

**Council tax band D**     **EPC rating B (86)**

## Features

- Two double bedrooms
- Spectacular panoramic views
- Private terrace on the seventh floor
- Modern duplex atop a 1930s Art Deco building
- Own front door
- Lift and communal gardens
- Local shops and cafes of Acre Lane on the doorstep
- Clapham and Brixton centres both a ten-minute stroll
- Abbeville Village a short walk away
- Victoria and Northern tube lines

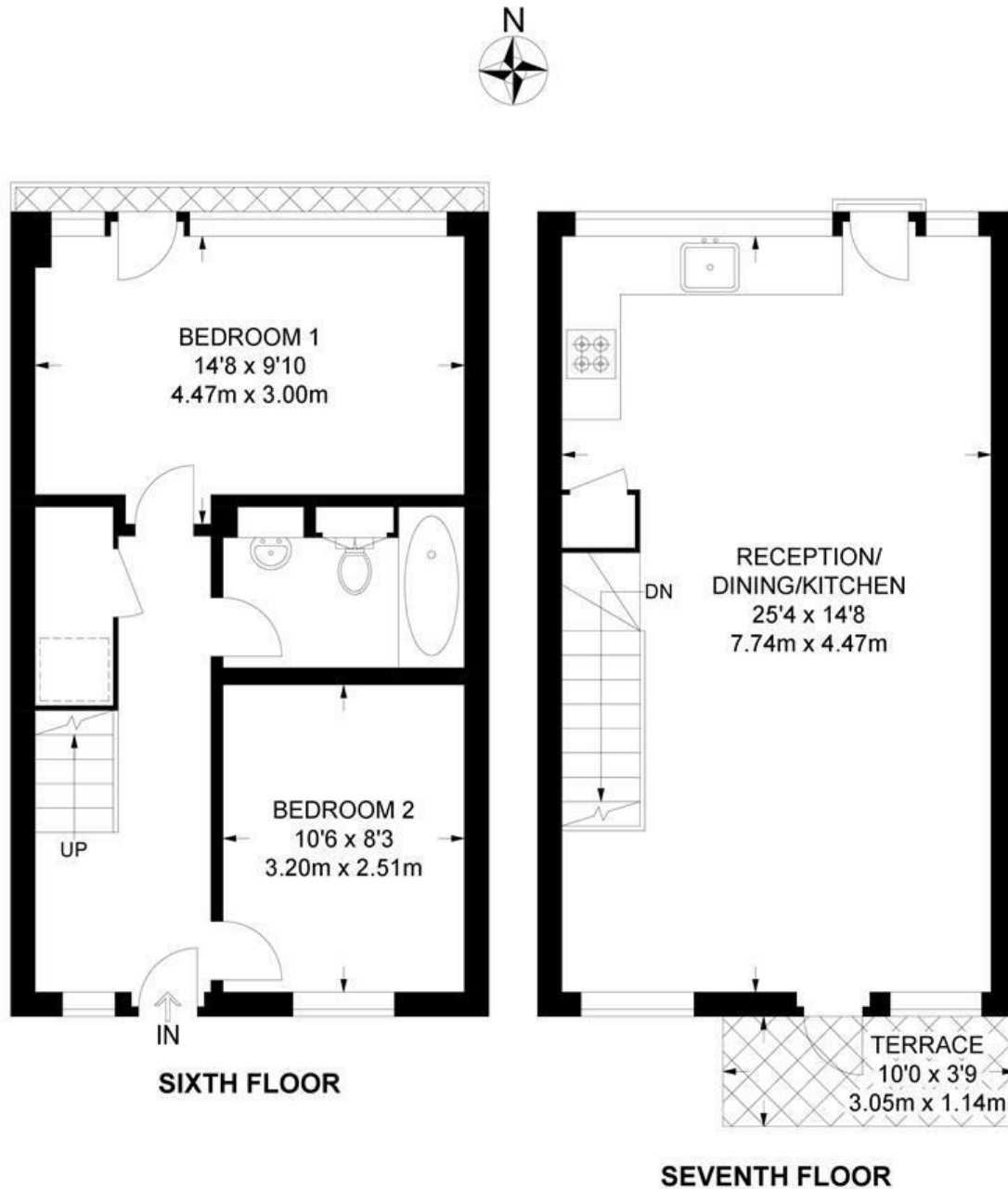




Acre Lane, Brixton, SW2

**Acre Lane, SW2**  
**2 Bedroom Flat**

APPROXIMATE GROSS INTERNAL AREA: 758 SQ FT / 70.4 SQ M



While we try our very best, floor plans are produced as a guide only and we take no responsibility for the precise accuracy with which any property is represented.

Acre Lane, Brixton, SW2

