



Hayter Road, Brixton, SW2

2 bedroom flat - conversion for sale

£620,000

Leasehold

Property Details

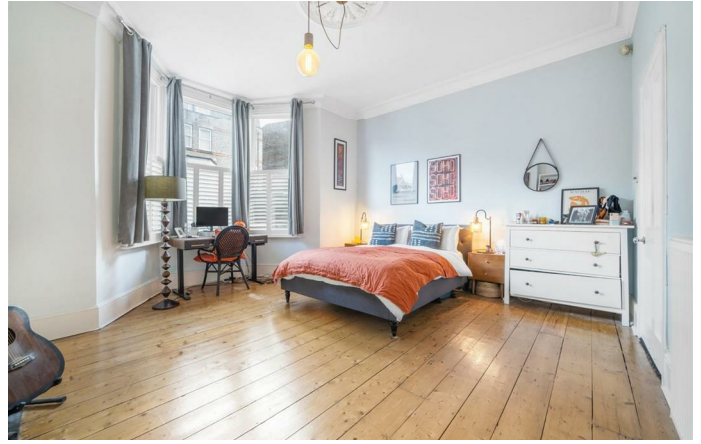
An appealing two double-bedroom flat with a private South-facing garden, set within a charming Victorian property with kerb appeal. The well-proportioned reception boasts original wooden floorboards and modern downlighting, with a charming square bay framing double French doors that open onto the garden, creating a seamless indoor-outdoor flow. The generous space accommodates both lounging and dining, ideal for entertaining. The lush, South-facing garden wraps around the property, offering a tranquil retreat and a suntrap perfect for al-fresco gatherings. The kitchen, set to the rear, also enjoys garden access, featuring sleek white cabinetry with the sink below the window enjoying leafy views, making cooking a pleasure. Both bedrooms are spacious doubles with high corniced ceilings. The principal is particularly generous, with a large bay window and wooden flooring, while the second has tranquil garden views, plus space for a desk if desired. The stylish bathroom features a luxurious walk-in shower with marbled tiles and fitted storage. A fantastic home in a sought-after location.

Council tax band D EPC rating E (51)

Features

- Two double bedrooms
- South-facing private garden
- Victorian conversion
- Bright & spacious throughout
- Desirable residential road
- Central Brixton an eight-minute stroll
- Clapham High-street around a fifteen-minute walk
- Close to Brockwell Park
- Victoria and Northern Lines
- Chain-free



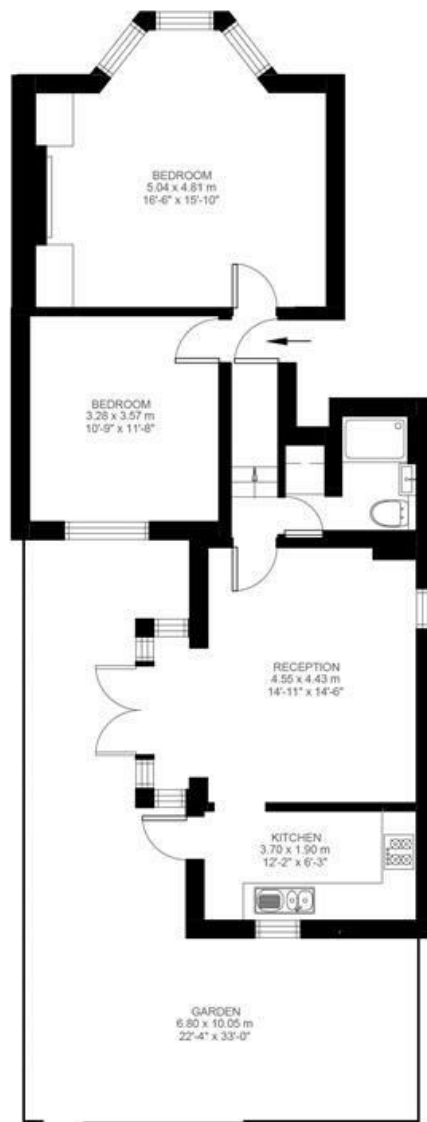


Hayter Road, Brixton, SW2

Hayter Road, Brixton, SW2

2 Bedroom Flat

Approximate internal area: 748 sqft 69 sqm



Ground Floor



While we do try our very best, floor plans are produced as a guide only and we take no responsibility for the precise accuracy with which any property is represented.

Hayter Road, Brixton, SW2

