

Coldharbour Lane, Brixton, SW9

2 bedroom flat - conversion for sale

£475,000

Leasehold

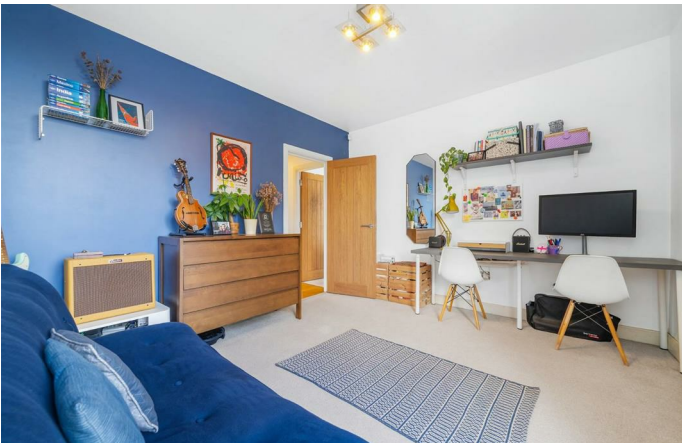
## Property Details

A bright and spacious two double bedroom apartment on the first floor of a Victorian property on Coldharbour Lane, ideally located close to transport links, local amenities, and green spaces, with easy access to both Brixton and Camberwell. Spanning over 875 square feet, this beautifully presented home boasts high ceilings and an abundance of natural light throughout. The generous reception room is bathed in light from two almost floor-to-ceiling sash windows, with stylish contemporary flooring enhancing the neutral décor. Flowing seamlessly into the modern kitchen, sleek gloss cabinetry and ample worktops create a stylish yet practical space with integrated appliances. A rare find in period conversions, both bedrooms are sizeable doubles. The principal bedroom enjoys dual-aspect windows and a charming curved feature wall, while the second bedroom is a versatile space currently arranged as a guest room and double home office. A tastefully finished bathroom with marbled tiling and a bathtub with overhead shower completes this elegant home, along with a handy storage cupboard in the entrance hallway. There is also residents bike storage located on the ground floor of the building.

## Features

- Two double bedrooms
- Victorian conversion
- Bright and airy
- Beautifully presented
- Over 875 square feet
- Bike storage
- Local amenities on the doorstep
- Train station just a two-minute walk away
- Minutes from Ruskin Park
- Access to Brixton, Camberwell and Herne Hill

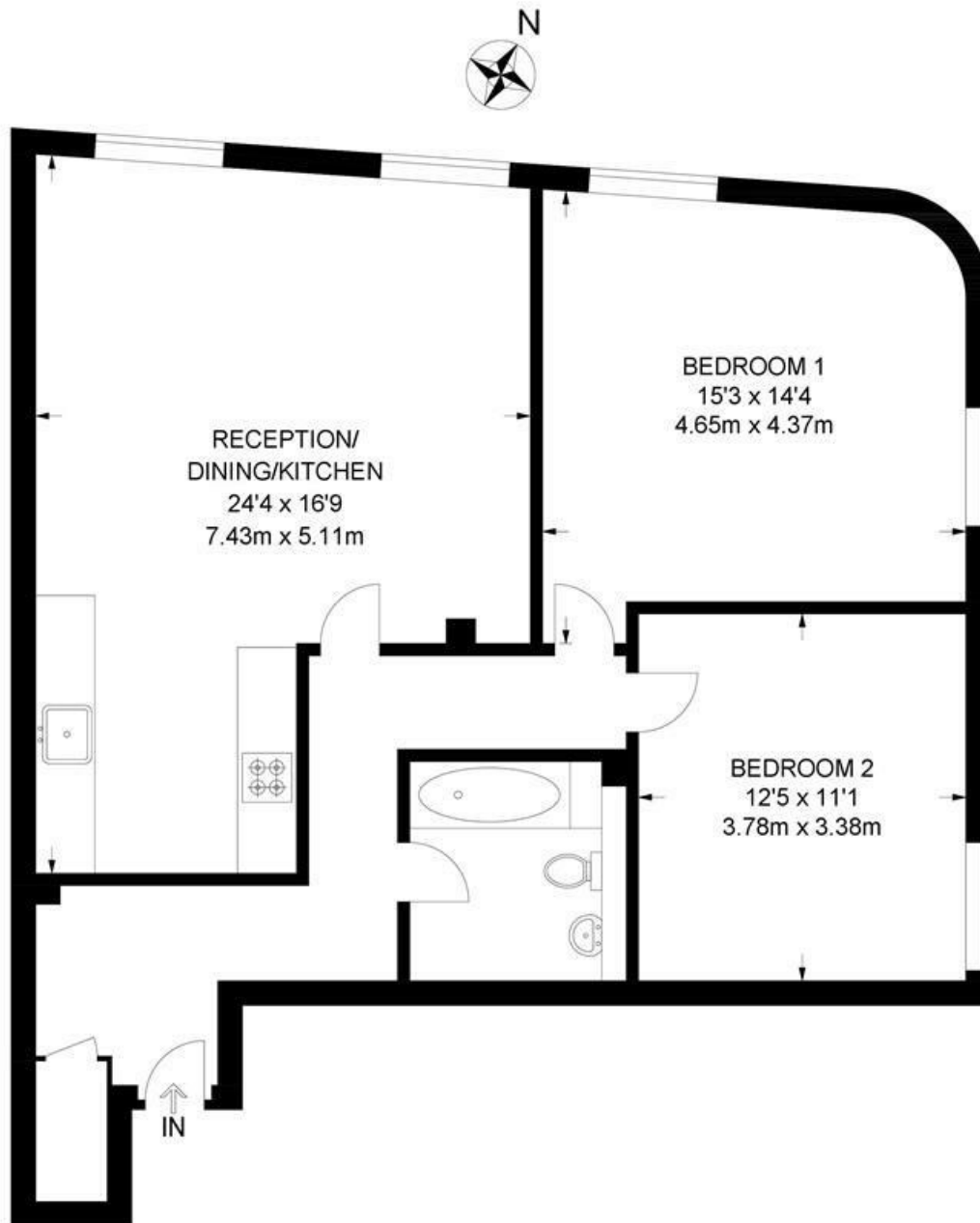
Council tax band D    EPC rating C (79)



Coldharbour Lane, Brixton, SW9

**Coldharbour Lane, SW9**  
**2 Bedroom Flat**

APPROXIMATE GROSS INTERNAL AREA: 876 SQ FT / 81.4 SQ M



FIRST FLOOR



While we try our very best, floor plans are produced as a guide only and we take no responsibility for the precise accuracy with which any property is represented.

Coldharbour Lane, Brixton, SW9

