



**Cotherstone Road, Brixton, SW2**

2 bedroom flat - conversion for sale

**£599,950**

Share of Freehold

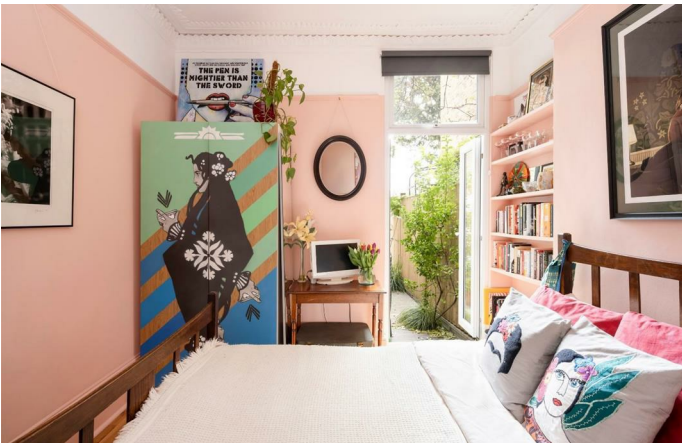
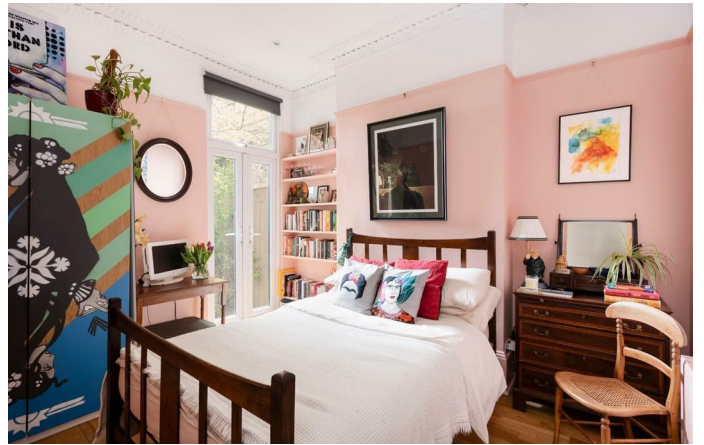
## Property Details

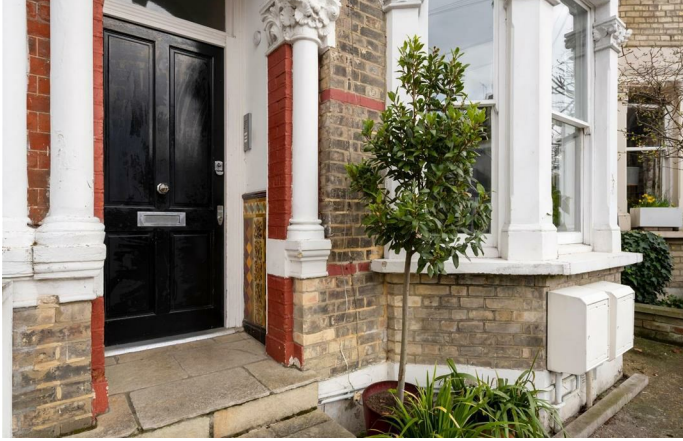
A characterful two-bedroom split-level flat with a private walled garden, set within an attractive period conversion on the sought-after Cotherstone Road, adjacent to a charming garden square. Blending contemporary design with original period features, this stylish home has been thoughtfully renovated to a high standard. Works in the past four years include a new kitchen and bathroom, modern flooring, professional redecoration, and damp-proofing. The private garden has also been enhanced with raised beds, fresh planting, and new fencing, creating a beautifully landscaped retreat. The spacious reception room boasts high ceilings, original cornicing, and a large bay window, flooding the space with natural light. The well-equipped shaker-style kitchen-diner offers a sociable layout, with French doors leading directly to the garden. Arranged over two floors, the principal bedroom enjoys garden access, while the second bedroom offers a peaceful upstairs retreat. A sleek bathroom features a luxurious walk-in rain shower. Additional storage is provided by a handy cellar, ensuring a tidy and organised home.

## Features

- Two double bedrooms
- Private walled garden
- Split-level Victorian conversion
- Beautifully presented throughout
- Adjacent to a pretty garden square
- Local shops, cafes, schools and pub all nearby
- Fifteen-minute walk to Brixton
- Nine-minute walk to Streatham Hill
- Excellent variety of transport links
- Share of freehold

Council tax band C    EPC rating D (59)

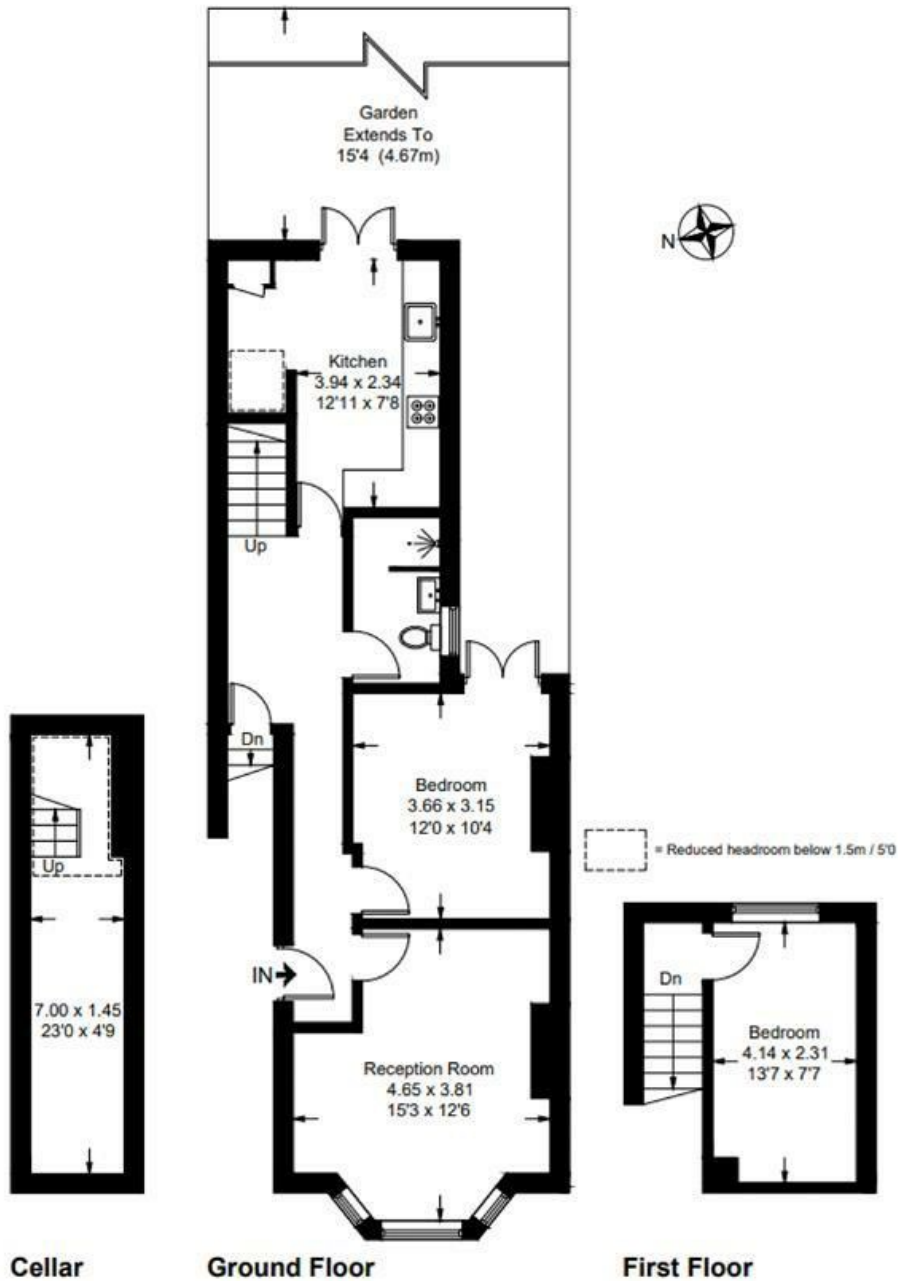




Cotherstone Road, Brixton, SW2

**Cotherstone Road, SW2**  
**2 Bedroom Flat**

APPROXIMATE GROSS INTERNAL AREA WITH CELLAR: **875 SQ FT / 81.3 SQ M**  
 APPROXIMATE GROSS INTERNAL AREA WITHOUT CELLAR: **762 SQ FT / 70.8 SQ M**



While we try our very best, floor plans are produced as a guide only and we take no responsibility for the precise accuracy with which any property is represented.

Cotherstone Road, Brixton, SW2

