**Bonham Road, Brixton, SW2**

2 bedroom flat to let

£507 Per Week

Furnished

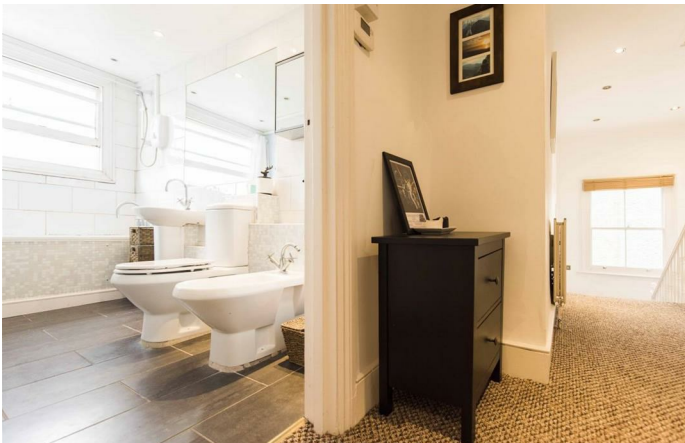
Property Details

This spacious two bed is split over various levels to add to the light and airy feel throughout. As you enter the property and head up the initial staircase you are met by a large double bedroom, separate reception room, kitchen and a modern bathroom. Stairs then lead up to a second bedroom, which is flooded with natural light through skylights. The bedrooms are of similar size, and larger than average. Bonham Road is a pretty Victorian terraced street only a short stroll to Brockwell Park and Brixton station.

Features

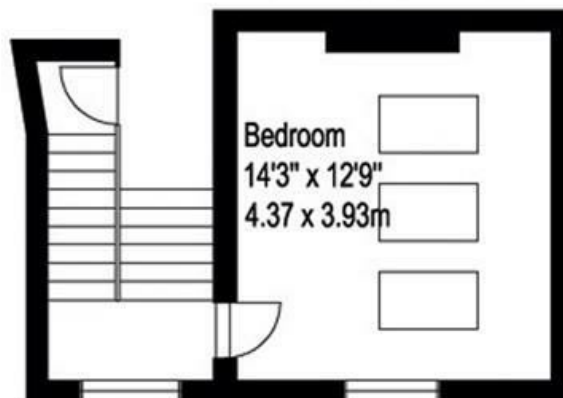
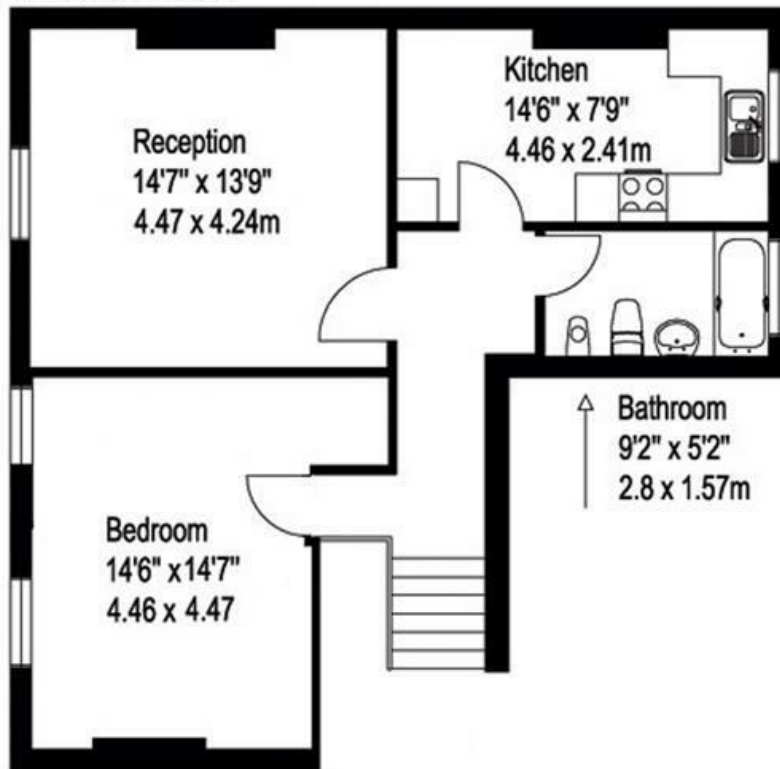
- Two bedroom
- Split-level
- Light and airy
- Close to transport links
- Victorian
- Close to Central Brixton

Council tax band D EPC rating E (54)



Bonham Road

Second Floor



2 bed flat.

Approx internal area:

872 sqft 81 sqm

While we do try our very best, floor plans are produced as a guide only and we take no responsibility for the precise accuracy with which any property is represented

Bonham Road, Brixton, SW2

