

**Branksome Road, Brixton, SW2**

2 bedroom flat - conversion for sale

£495,000

Leasehold

Property Details

A two bedroom apartment with a private roof terrace set within a Victorian terrace property on Branksome Road, an attractive residential street between Clapham and Brixton, with local amenities and eateries on the doorstep. Upon entering, you are greeted with an open-plan reception room offering space to cook, dine and unwind, with modern flooring and large sash windows which flood the room in natural light. Neatly tucked to one side the kitchen runs along one wall, maximising the space whilst not interrupting the flow of light. Neutral décor and modern down lighting make this hub of the home the ideal place to entertain. Both bedrooms are separated from one another whilst also being peacefully nestled away from the street with leafy views over the neighbouring gardens. The principal bedroom is particularly appealing, boasting direct access to a private terrace, which is a wonderful spot for morning coffee or evening relaxation under the stars, after watching the sun set over the rooftops. A blank canvas apartment with the potential to add your own decorative touches.

Council tax band C **EPC rating C (70)**

Features

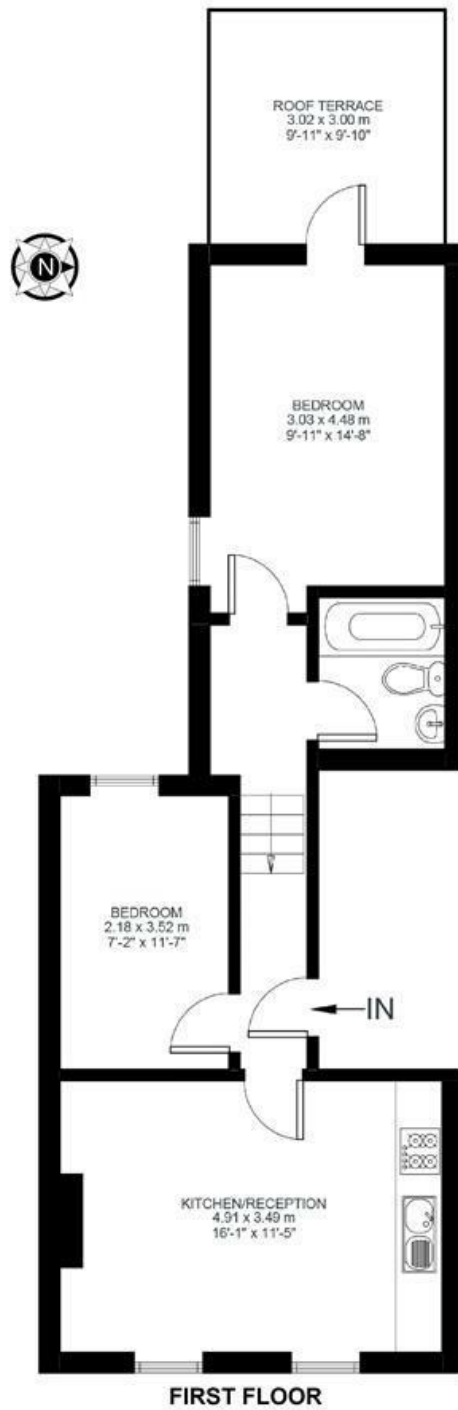
- Two double bedrooms
- Private roof terrace
- Victorian Conversion
- Bright and airy
- Local amenities and eateries on the doorstep
- Equidistant between Clapham and Brixton
- Northern and Victoria Lines, Overground and Trains
- Chain-free
- Share of freehold will be granted



Branksome Road, Brixton, SW2

Branksome Road, SW2
2 Bedroom Flat

APPROXIMATE GROSS INTERNAL AREA: **525 SQ FT / 49 SQ M**



While we try our very best, floor plans are produced as a guide only and we take no responsibility for the precise accuracy with which any property is represented.

Branksome Road, Brixton, SW2

