



Sulina Road, Brixton, SW2

4 bedroom house - terraced to let

£877 Per Week

Furnished

Property Details

Introducing a beautifully presented four-bedroom terraced house, perfectly positioned between the vibrant areas of Brixton and Clapham. Currently undergoing tasteful redecoration and partial refurbishment, this home offers an excellent opportunity to settle in a dynamic and sought-after location.

Features

- Private garden
- Light and airy
- Close to transport links
- Terraced House
- Four Bedrooms
- 2 Bathrooms
- One Reception
- Undergoing a redecoration and partial refurbishment to enhance its appeal and functionality

Council tax band E EPC rating C (70)



Sulina Road, Brixton, SW2

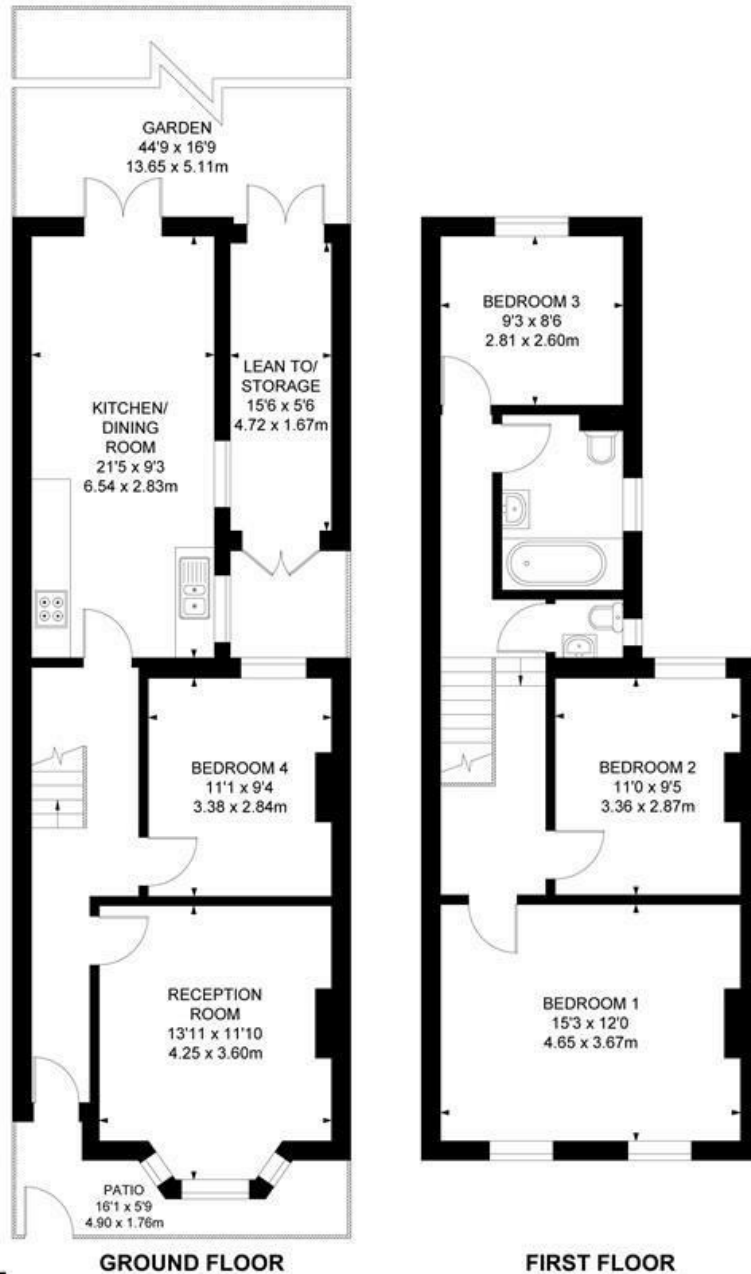
Sulina Road, SW2
4 Bedroom Flat

APPROXIMATE GROSS INTERNAL AREA :
 (INCLUDING LEAN TO/STORAGE)

1233 SQ FT / 114.55 SQ M

LEAN TO/STORAGE :

80 SQ FT / 7.41 SQ M



While we try our very best, floor plans are produced as a guide only and we take no responsibility for the precise accuracy with which any property is represented.

Sulina Road, Brixton, SW2

