



Reed Place, Clapham, SW4

2 bedroom flat - conversion for sale

£599,950

Leasehold

Property Details

This impressive two-bedroom apartment is securely nestled within the historic, gated grounds of a sought-after Victorian school. A striking open-plan reception with soaring double-height ceilings is bathed in natural light from large windows. Offering ample space to lounge, dine, and entertain, the area flows seamlessly into a wrap-around kitchen with integrated appliances, generous cabinetry, and a central island—perfect for home cooks and social gatherings. Wooden flooring enhances the sense of light and space throughout. Above, a charming mezzanine with skylights and frosted glass balustrades provides an ideal home office, yoga space, or snug. Both bedrooms are peacefully positioned at the rear, separated for privacy, with the principal bedroom boasting lofted ceilings and Velux windows. A stylish, neutral bathroom sits conveniently between them. This characterful home benefits from beautifully maintained grounds, a secure gated setting, shared parking, bike shed and a friendly community atmosphere. Major works have been completed with full renovation and re-tiling of the roof and building structure.

Council tax band C EPC rating E (47)

Features

- Two bedrooms
- Versatile mezzanine
- Grade II Listed Victorian school conversion
- Over 1,000 square feet arranged over two floors
- Maintained and gated grounds with shared parking
- Clapham High Street just a four-minute stroll
- Northern Line an eight-minute walk
- Clapham Common a leisurely ten-minute walk
- Chain-free



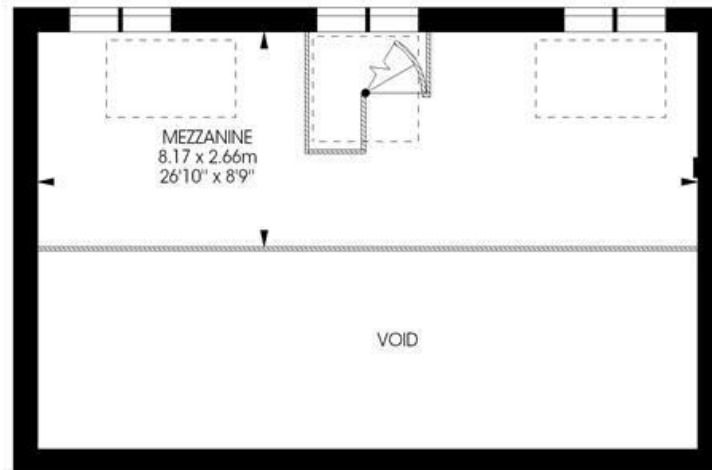


Reed Place, Clapham, SW4

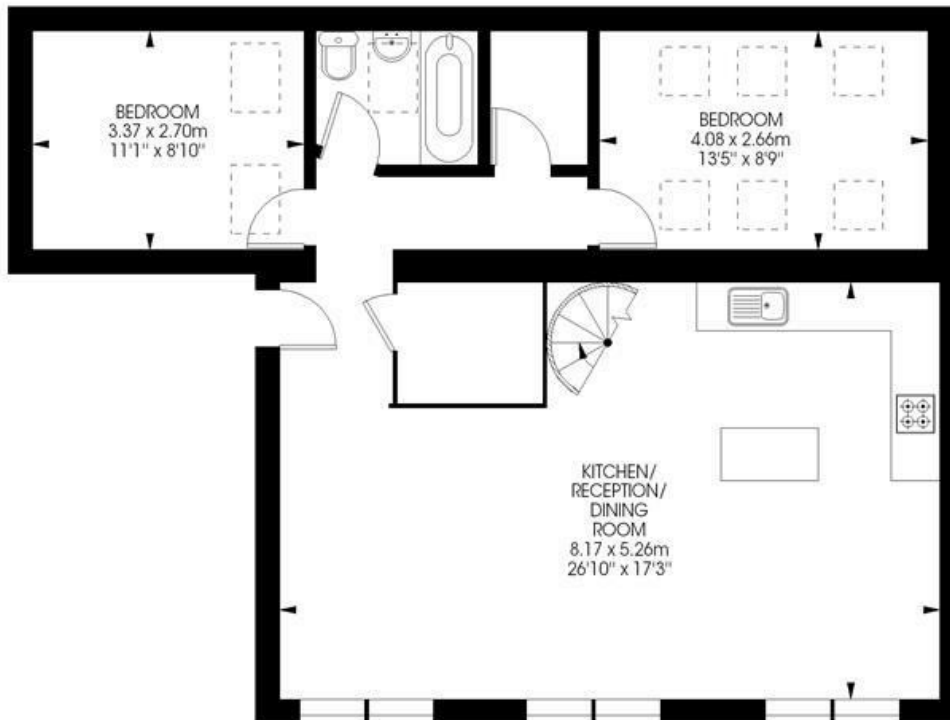
Reed Place, SW4
2 bedroom flat

Approximate internal area: (Excluding Void)

1040 sqft / 96.6 sqm



Fifth Floor



Fourth Floor



While we try our very best, floor plans are produced as a guide only and we take no responsibility for the precise accuracy with which any property is represented.

Reed Place, Clapham, SW4

