



Lambert Road, Brixton, SW2

1 bedroom flat - conversion for sale

£495,000

Share of Freehold

Property Details

A fine example of a one-bedroom, Victorian conversion garden flat, brimming with character and located on one of Brixton's most popular residential streets. Lambert Road is located just off Brixton Hill, within close proximity to the amenities in both Brixton and Clapham. This ground floor property is located within a handsome, detached Victorian house and has multiple selling points, although the pièce de résistance has to be the spacious open-plan reception and kitchen. The beautifully finished kitchen is sleek and modern, with ample room for a dining table and there is also plenty of space for a dedicated area to relax in the reception room. Down the charmingly tiled hallway, the bathroom has been recently refurbished to a high standard, complete with stylish tiling and a roll-top bath. Tucked away quietly to the rear of the property, the bedroom is a comfortable double room, with plenty of space for storage. Double doors allow for an abundance of natural light as well as providing access onto the private South facing garden, the perfect spot in which to relax or entertain during the warmer months and a fantastic selling point.

Council tax band C EPC rating D (68)

Features

- One double bedroom
- Double fronted Victorian conversion
- Characterful features
- Over 550 square feet of internal living space
- Larger than average South facing private garden
- Sought-after residential street
- Walking distance to the Victoria and Northern Line
- Share of freehold





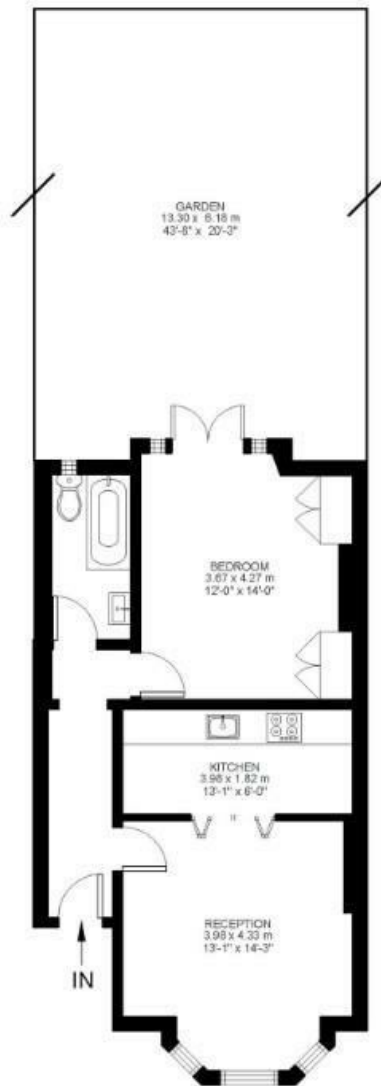
1 Bed Flat

Approx internal area:

541 sqft 50 sqm

While we do try our very best, floor plans are produced as a guide only and we take no responsibility for the precise accuracy with which any property is represented

Lambert Road



Ground Floor



Lambert Road, Brixton, SW2

