



**Spenser Road, Herne Hill, SE24**

3 bedroom flat - conversion for sale

**£735,000**

Share of Freehold

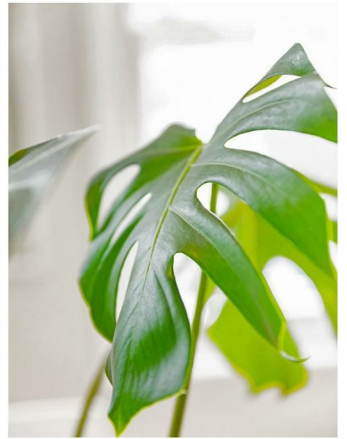
## Property Details

An elegant, split level, three-bedroom flat, occupying the top floors of an attractive Victorian terrace in Poets' Corner. Spenser Road is a charming, tree-lined road in this highly sought-after network of streets, sandwiched between Herne Hill and Brixton. This is a beautifully presented home, an appealing mix of elegant design and characterful features, with staircases meandering up the property that promote a spacious and airy atmosphere. The property is split over various levels which amplifies the feeling of space, and with three comfortable double bedrooms, the versatile layout lends itself to anyone looking to rent out the spare bedrooms or share with friends, whilst maintaining a sense of space and privacy. With two modern bathrooms, the property has been converted with both style and practicality in mind. Spenser Road is situated in the heart of Poets' Corner, a six-minute walk to Herne Hill station and Brixton tube station is a ten-minute stroll. The open spaces of the Green Flag award Brockwell Park are also at the end of the road, along with its iconic 1930's Lido and sports facilities.

## Features

- Three double bedrooms
- Two bathrooms
- Victorian conversion
- Split-level apartment
- Brockwell Park and the Lido located at the end of the road
- Sought-after location in the heart of Poets Corner
- Nearly 950 square feet of internal living space
- An 8 minute walk to Herne Hill train station
- An 11 minute walk to Brixton tube station
- Chain-free

Council tax band D    EPC rating E (49)





**K**

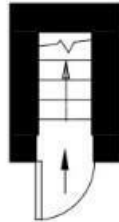
Spenser Road

3 Bed Flat

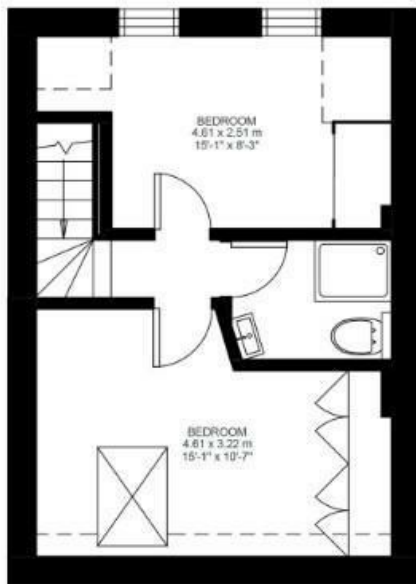
Approx internal area:

**940 sqft 87 sqm**

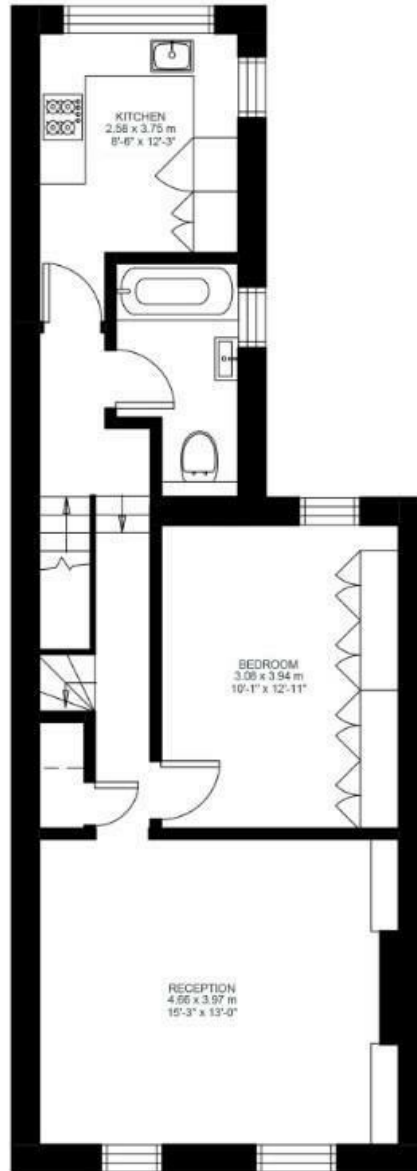
While we do try our very best, floor plans are produced as a guide only and we take no responsibility for the precise accuracy with which any property is represented



Ground Floor



Second Floor



First Floor



Spenser Road, Herne Hill, SE24

