



Canterbury Crescent, Brixton, SW9

£575,000

2 bedroom flat - purpose built for sale

Property Details

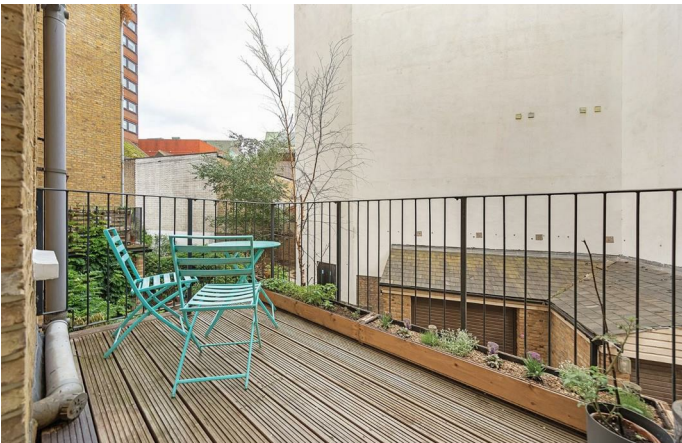
A larger than average two-bedroom, two-bathroom flat, in a Victorian mansion block close to the action in thriving Brixton. Canterbury Crescent is a five-minute walk Brixton's popular hangouts; Pop Brixton, Market Row and Brixton Village. The apartment comprises a good size reception room, with large bay sash windows flooding the room with natural light, perfect for relaxing and entertaining guests, adjacent is a stylish eat-in kitchen with integrated appliances. The two bedrooms are located at the back of the building, the master bedroom has an en-suite bathroom and access out onto the balcony, perfect for relaxing after a long day at work. The entire block was renovated with high-quality workmanship 15 years ago, installing new double glazing and sound insulating all the flats, meaning low energy costs and no disturbing neighbours if you want to have a dinner party.

Council tax band

EPC rating C (75)

Features

- Two double bedrooms
- Victorian mansion block
- Over 800 square feet of internal living space
- Double-glazing and refurbished exterior
- Private terrace
- Situated in the heart of Brixton
- A short walk to Brixton Village and the tube station





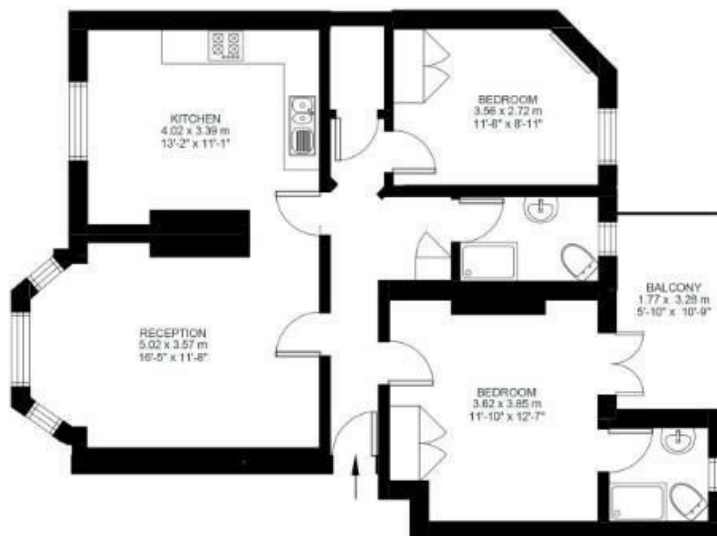
Canterbury Crescent

2 Bed Flat

Approx internal area:

802 sqft 75 sqm

While we do try our very best, floor plans are produced as a guide only and we take no responsibility for the precise accuracy with which any property is represented



First Floor



Canterbury Crescent, Brixton, SW9

